

Sentuh Digital Signage



DS Indoor

DS Outdoor



Display Visual Canggih Buatan Anak Bangsa

Tersedia dalam ukuran :

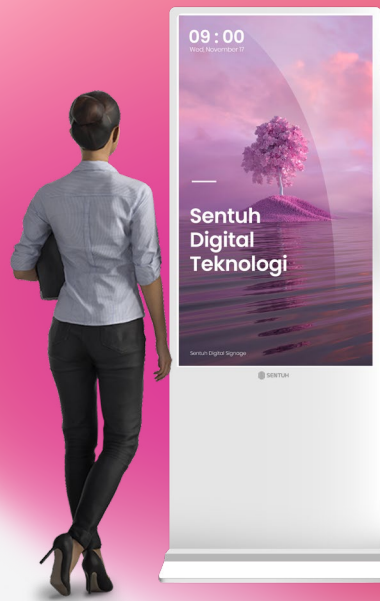
- 10
- 22
- 43
- 49
- 55
- 65
- 75
- 85



Sentuh Digital Signage

Solusi komunikasi visual yang menggunakan layar elektronik untuk menampilkan informasi, iklan, atau konten multimedia secara dinamis.

Dilengkapi juga dengan **CMS (Content Management System)** yang akan memudahkan pengguna untuk membuat, mengelola, dan mengorganisir konten Digital Signage secara terpusat (**centralized**).



Media Advertising & Information Center

Sentuh Digital Signage dapat memberikan pengalaman visual yang kaya dengan menampilkan beragam konten, seperti gambar, video, grafis, animasi, suara, baik yang bersifat interaktif maupun non-interaktif.

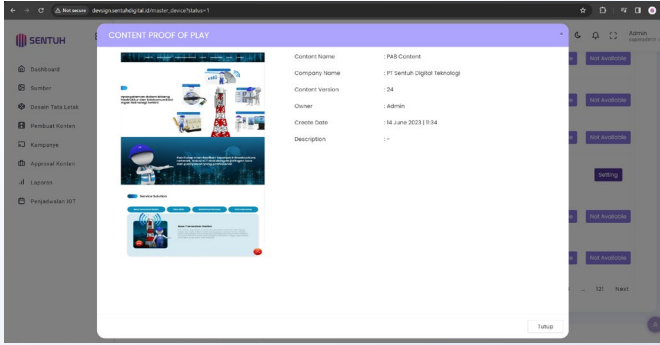
Centralized Content, Schedule & System updates

Sentuh Digital Signage dapat dikelola secara tersentral. Jadi pengguna dapat melakukan pembaruan konten, menghidupkan/mematikan alat, penjadwalan konten, campaign area, menyetujui/menolak konten yang akan ditayangkan, serta monitoring banyaknya dan durasi konten yang ditayangkan hingga pembaruan sistem Sentuh Digital Signage, secara mudah dan terpusat.



Realtime Active Website

Sentuh Digital Signage dapat menampilkan informasi atau konten secara realtime, website berjalan secara aktif dan dapat dinavigasi dengan teknologi touchscreen. Konten ini dapat difungsikan untuk menampilkan berita terkini, jadwal transportasi umum, cuaca terkini, stock product dan lainnya.

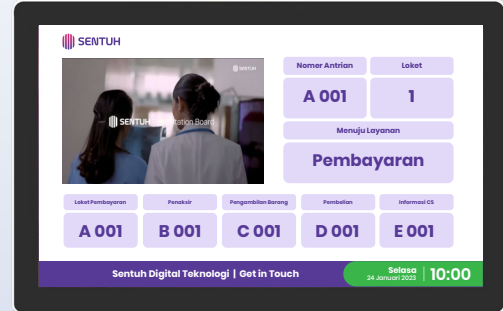


Proof of Play Content Report

Fitur yang dapat memberikan laporan ke pengguna mengenai konten yang sedang berjalan dan report berapa kali penayangannya. Sehingga fitur ini dapat memberikan informasi penyebaran penayangan.

Multi Frame dan Multi Layout

Sentuh Digital Signage dapat menampilkan tidak hanya 1 informasi, namun dapat menampilkan beragam informasi dalam 1 tayangan dengan fleksibilitas tampilan multiframe dan multilayout, yang dapat menggabungkan beberapa tipe media seperti image, video, dan website.



Industrial Panel with >40% Local Component

Semua varian produk Sentuh Digital Signage dibuat menggunakan bahan industrial panel yang memenuhi standar kualitas industri yang dapat digunakan secara 24/7. Tingkat komponen dalam negeri pada produk ini mencapai lebih dari 40%, menunjukkan komitmen kami untuk mendukung industri dalam negeri dan menghasilkan produk berkualitas.

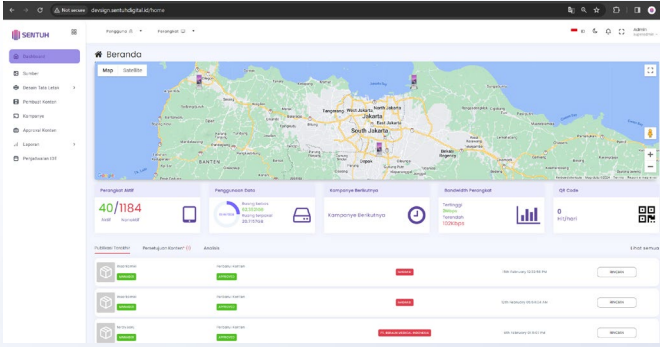


Featured with Sentuh CMS

Pengaturan konten digital secara sentral dengan kemudahan penggunaan, controlling, pengaturan perangkat dan analisa report yang disajikan dalam kemudahan visual dashboard dan modern User Interface.

Sentuh CMS memungkinkan pengguna dapat melakukannya dari jarak jauh untuk penjadwalan konten, integrasi multimedia, dan manajemen yang efisien, menjadikan Digital Signage ini solusi yang inovatif dan mudah digunakan untuk berbagai kebutuhan komunikasi visual.



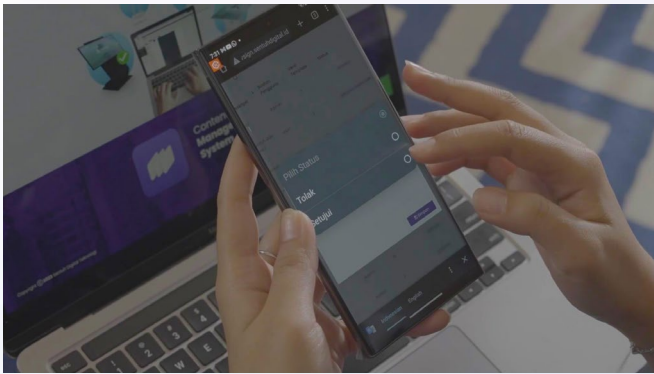
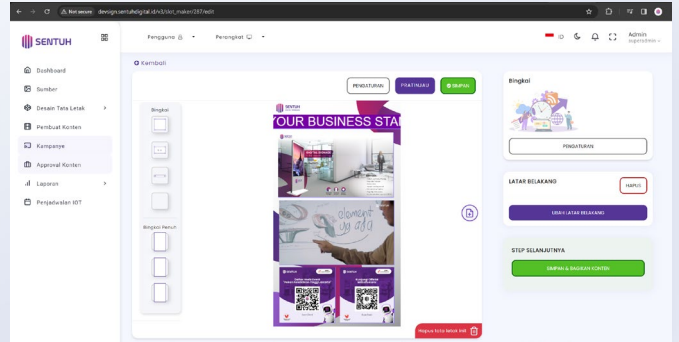


Main Dashboard

Dashboard yang berfungsi sebagai pusat monitoring seluruh konten, user dan device secara realtime untuk kemudahan pengawasan dan mitigasi oleh user secara cepat dan tepat

Easy Content Designer

Dengan Easy Content Designer, pengguna dapat dengan cepat dan mudah merancang konten tanpa perlu memiliki keahlian desain yang tinggi. Antarmuka yang intuitif memungkinkan pengguna untuk dengan leluasa mengatur tata letak, menambahkan elemen visual, dan menyusun konten dengan mudah.

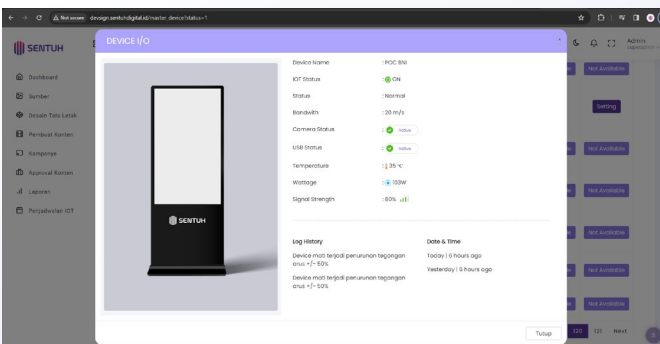
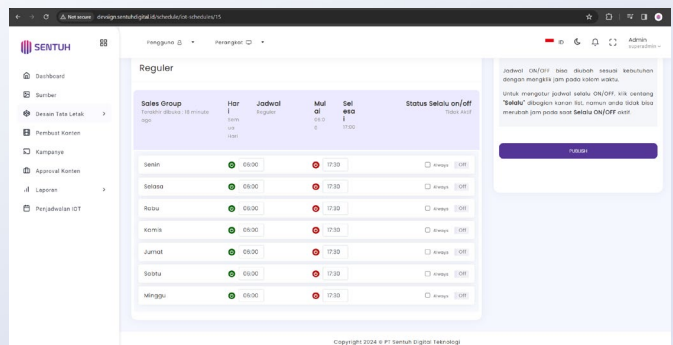


Approval System User Management

Dilengkapi dengan sistem Approval yang dapat diakses dari laptop, tab, ataupun mobile phone untuk memverifikasi konten, sehingga menjamin keamanan penayangan konten sebelum content terpublish.

IoT Scheduler

Fitur yang dibuat untuk mengatur dan mengelola jadwal penayangan konten. Dengan IoT, pengguna dapat melakukan otomatisasi jadwal penayangan konten berdasarkan hari, waktu mulai dan waktu selesai penayangan.

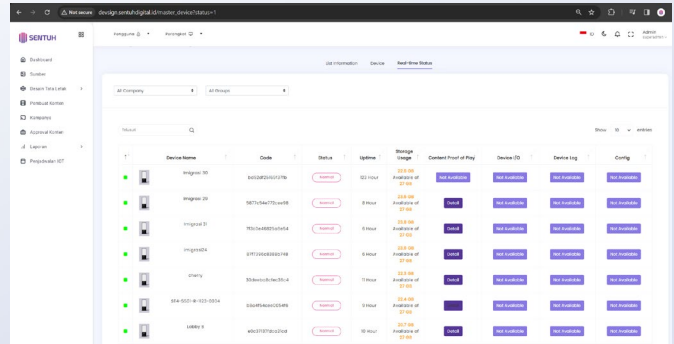


Manajemen Pemantauan Device

Mengetahui keadaan Power IO, Lokasi, dan Storage pada setiap device, sehingga memudahkan user dalam melakukan pengawasan, dan pengelolaan untuk meminimalisir adanya device yang tidak bekerja secara optimal.

SIMAK Control System | SIMACS

Sentuh SIMAK adalah fitur IoT command Services pada Sentuh CMS, adalah sistem pengaturan power IO device tersentral baik dilakukan secara jadwal maupun realtime. User juga dapat memonitor kesehatan kelistrikan dan biaya yang digunakan, sehingga dapat menentukan keefektifan penggunaan device.



All Report System



Sistem report secara menyeluruh dari konten, alat, hingga aktifitas user yang dapat dikemas dalam format report Ms. Word, Excel, Power Point, ataupun pdf.



On Premise Ready

Sentuh CMS disiapkan untuk ready On-Premise, dengan fleksibilitas system dan kustomisasi pada setiap fitur serta server mandiri pengguna.

SENTUH DIGITAL SIGNAGE INDOOR STANDING NON TOUCH **I** **NT**

DISPLAY				
Panel Size	43	49	55	65
Backlight	LED	LED	LED	LED
Screen Resolution	1080 X 1920 (Full HD)	1080 X 1920 (Full HD)	1080 X 1920 (Full HD)	1080 X 1920 (Full HD)
Display Ratio	9 : 16	9 : 16	9 : 16	9 : 16
Brightness	450 cd/m ²	450 cd/m ²	450 cd/m ²	450 cd/m ²
Backlight Lifetime	>50.000 Hours	>50.000 Hours	>50.000 Hours	>50.000 Hours
Screen Orientation	Portrait	Portrait	Portrait	Portrait
Visual Angle	178° (H) / 178° (V)	178° (H) / 178° (V)	178° (H) / 178° (V)	178° (H) / 178° (V)
Environment	Indoor	Indoor	Indoor	Indoor
MAIN BOARD				
Operating System	Android	Android	Android	Android
RAM	4 GB	4 GB	4 GB	4 GB
Storage	16 GB	16 GB	16 GB	16 GB
Network	LAN	LAN	LAN	LAN
	WIFI 2.4 GHz	WIFI 2.4 GHz	WIFI 2.4 GHz	WIFI 2.4 GHz
	Bluetooth	Bluetooth	Bluetooth	Bluetooth
CAMERA				
Camera	5 Megapixel	5 Megapixel	5 Megapixel	5 Megapixel
Microphone	Yes	Yes	Yes	Yes
AUDIO				
Speaker	Yes	Yes	Yes	Yes
APPLICATION				
Application System	Sentuh CMS Basic	Sentuh CMS Basic	Sentuh CMS Basic	Sentuh CMS Basic
Monitoring	Sentuh Agent	Sentuh Agent	Sentuh Agent	Sentuh Agent
CONNECTIVITY PORTS				
Ports	USB, LAN, AC Power	USB, LAN, AC Power	USB, LAN, AC Power	USB, LAN, AC Power
POWER (APPROX.)				
Power Consumption (Max)	100 W	100 W	100 W	110 W
Power Consumption (Avg)	80 W	80 W	80 W	90 W
Power Requirement	AC 100V - 240V 50/60 Hz	AC 100V - 240V 50/60 Hz	AC 100V - 240V 50/60 Hz	AC 100V - 240V 50/60 Hz
ACCESSORIES				
Accessories	AC Power Cable, Backdoor Key, Base Stand	AC Power Cable, Backdoor Key, Base Stand	AC Power Cable, Backdoor Key, Base Stand	AC Power Cable, Backdoor Key, Base Stand
CUSTOMIZE*				
Logo	Yes	Yes	Yes	Yes
Color	Yes	Yes	Yes	Yes
	<i>*Terms & Conditions Applied</i>	<i>*Terms & Conditions Applied</i>	<i>*Terms & Conditions Applied</i>	<i>*Terms & Conditions Applied</i>

I Indoor **NT** Non Touchscreen

SENTUH DIGITAL SIGNAGE INDOOR STANDING TOUCHSCREEN



DISPLAY				
Panel Size	43	49	55	65
Backlight	LED	LED	LED	LED
Screen Resolution	1080 X 1920 (Full HD)	1080 X 1920 (Full HD)	1080 X 1920 (Full HD)	1080 X 1920 (Full HD)
Display Ratio	9 : 16	9 : 16	9 : 16	9 : 16
Brightness	450 cd/m ²	450 cd/m ²	450 cd/m ²	450 cd/m ²
Backlight Lifetime	>50.000 Hours	>50.000 Hours	>50.000 Hours	>50.000 Hours
Screen Orientation	Portrait	Portrait	Portrait	Portrait
Visual Angle	178° (H) / 178° (V)	178° (H) / 178° (V)	178° (H) / 178° (V)	178° (H) / 178° (V)
Environment	Indoor	Indoor	Indoor	Indoor
TOUCHSCREEN				
Touchscreen	Capacitive	Capacitive	Capacitive	Capacitive
Touchpoint	10 Points	10 Points	10 Points	10 Points
MAIN BOARD				
Operating System	Android	Android	Android	Android
RAM	4 GB	4 GB	4 GB	4 GB
Storage	16 GB	16 GB	16 GB	16 GB
Network	LAN	LAN	LAN	LAN
	WIFI 2.4 GHz	WIFI 2.4 GHz	WIFI 2.4 GHz	WIFI 2.4 GHz
	Bluetooth	Bluetooth	Bluetooth	Bluetooth
CAMERA				
Camera	5 Megapixel	5 Megapixel	5 Megapixel	5 Megapixel
Microphone	Yes	Yes	Yes	Yes
AUDIO				
Speaker	Yes	Yes	Yes	Yes
APPLICATION				
Application System	Sentuh CMS Basic	Sentuh CMS Basic	Sentuh CMS Basic	Sentuh CMS Basic
Monitoring	Sentuh Agent	Sentuh Agent	Sentuh Agent	Sentuh Agent
CONNECTIVITY PORTS				
Ports	USB, LAN, AC Power	USB, LAN, AC Power	USB, LAN, AC Power	USB, LAN, AC Power
POWER (APPROX.)				
Power Consumption (Max)	120 W	120 W	120 W	140 W
Power Consumption (Avg)	100 W	100 W	100 W	120 W
Power Requirement	AC 100V - 240V 50/60 Hz	AC 100V - 240V 50/60 Hz	AC 100V - 240V 50/60 Hz	AC 100V - 240V 50/60 Hz
ACCESSORIES				
Accessories	AC Power Cable, Backdoor Key, Base Stand	AC Power Cable, Backdoor Key, Base Stand	AC Power Cable, Backdoor Key, Base Stand	AC Power Cable, Backdoor Key, Base Stand
CUSTOMIZE*				
Logo	Yes	Yes	Yes	Yes
Color	Yes	Yes	Yes	Yes
	<i>*Terms & Conditions Applied</i>	<i>*Terms & Conditions Applied</i>	<i>*Terms & Conditions Applied</i>	<i>*Terms & Conditions Applied</i>

I Indoor **T** Touchscreen

SENTUH DIGITAL SIGNAGE INDOOR WALL MOUNT NON TOUCH **I** **NT**

DISPLAY		
Panel Size	43	55
Backlight	LED	LED
Screen Resolution	1920 X 1080 (Full HD)	1920 X 1080 (Full HD)
Display Ratio	16 : 9	16 : 9
Brightness	450 cd/m ²	450 cd/m ²
Backlight Lifetime	>50.000 Hours	>50.000 Hours
Screen Orientation	Portrait & Landscape	Portrait & Landscape
Visual Angle	178° (H) / 178° (V)	178° (H) / 178° (V)
Environment	Indoor	Indoor
MAIN BOARD		
Operating System	Android	Android
RAM	4 GB	4 GB
Storage	16 GB	16 GB
Network	LAN	LAN
	WIFI 2.4 GHz	WIFI 2.4 GHz
	Bluetooth	Bluetooth
AUDIO		
Speaker	Yes	Yes
APPLICATION		
Application System	Sentuh CMS Basic	Sentuh CMS Basic
Monitoring	Sentuh Agent	Sentuh Agent
CONNECTIVITY PORTS		
Ports	USB, LAN, AC Power	USB, LAN, AC Power
POWER (APPROX.)		
Power Consumption (Max)	110 W	120 W
Power Consumption (Avg)	90 W	100 W
Power Requirement	AC 100V - 240V 50/60 Hz	AC 100V - 240V 50/60 Hz
ACCESSORIES		
Accessories	AC Power Cable, Backdoor Key, Wall Bracket (Additional)	AC Power Cable, Backdoor Key, Wall Bracket (Additional)

I Indoor **NT** Non Touchscreen

SENTUH DIGITAL SIGNAGE INDOOR WALL MOUNT TOUCHSCREEN **I** **T**

DISPLAY			
Panel Size	10,1	43	55
Backlight	LED	LED	LED
Screen Resolution	1280 X 800 (HD)	1920 X 1080 (Full HD)	1920 X 1080 (Full HD)
Display Ratio	16 : 10	16 : 9	16 : 9
Brightness	300 cd/m ²	450 cd/m ²	450 cd/m ²
Backlight Lifetime	>50.000 Hours	>50.000 Hours	>50.000 Hours
Screen Orientation	Portrait/Landscape	Portrait & Landscape	Portrait & Landscape
Visual Angle	178° (H) / 178° (V)	178° (H) / 178° (V)	178° (H) / 178° (V)
Environment	Indoor	Indoor	Indoor
TOUCHSCREEN			
Touchscreen	Capacitive	Capacitive	Capacitive
Touchpoint	10 Points	10 Points	10 Points
MAIN BOARD			
Operating System	Android	Android	Android
RAM	4 GB	4 GB	4 GB
Storage	16 GB	16 GB	16 GB
Network	LAN	LAN	LAN
	WIFI 2.4 GHz	WIFI 2.4 GHz	WIFI 2.4 GHz
	Bluetooth	Bluetooth	Bluetooth
CAMERA			
Camera	Front Camera	-	-
AUDIO			
Speaker	Yes	Yes	Yes
Microphone	Yes, Array Microphone	-	-
APPLICATION			
Application System	Sentuh CMS Basic	Sentuh CMS Basic	Sentuh CMS Basic
Monitoring	Sentuh Agent	Sentuh Agent	Sentuh Agent
CONNECTIVITY PORTS			
Ports	USB, LAN, AUX, DC Power Input	USB, LAN, AC Power	USB, LAN, AC Power
POWER (APPROX.)			
Power Consumption (Max)	50 W	110 W	120 W
Power Consumption (Avg)	35 W	90 W	100 W
Power Requirement	AC 100V - 240V 50/60 Hz	AC 100V - 240V 50/60 Hz	AC 100V - 240V 50/60 Hz
ACCESSORIES			
Accessories	AC Adaptor, Braille Button, Wall Bracket (Additional)	AC Power Cable, Backdoor Key, Wall Bracket (Additional)	AC Power Cable, Backdoor Key, Wall Bracket (Additional)

I Indoor **T** Touchscreen

SENTUH DIGITAL SIGNAGE PREMIUM DOUBLE SIDED I NT

DISPLAY		
Panel Size	55 Standing Double Sided	55 Hanging Double Sided
Backlight	LED	LED
Screen Resolution	1080 X 1920 (Full HD)	1080 X 1920 (Full HD)
Display Ratio	16 : 9	16 : 9
Brightness	350 cd/m ²	350 cd/m ²
Backlight Lifetime	>50.000 Hours	>50.000 Hours
Screen Orientation	Portrait	Portrait
Visual Angle	178° (H) / 178° (V)	178° (H) / 178° (V)
Environment	Indoor	Indoor
MAIN BOARD		
Operating System	Android	Android
RAM	4 GB	4 GB
Storage	16 GB	16 GB
Network	LAN	LAN
	WIFI 2.4 GHz	WIFI 2.4 GHz
	Bluetooth	Bluetooth
AUDIO		
Speaker	Yes	Yes
APPLICATION		
Application System	Sentuh CMS Basic	Sentuh CMS Basic
Monitoring	Sentuh Agent	Sentuh Agent
CONNECTIVITY PORTS		
Ports	USB, LAN, AC Power	USB, LAN, AC Power
POWER (APPROX.)		
Power Consumption (Max)	220 W	220 W
Power Consumption (Avg)	180 W	180 W
Power Requirement	AC 100V - 240V 50/60 Hz	AC 100V - 240V 50/60 Hz
ACCESSORIES		
Accessories	AC Power Cable, Backdoor Key, Base Stand	AC Power Cable, Backdoor Key, Base Stand
CUSTOMIZED*		
Logo	Yes	Yes
Color	Yes	Yes
	<i>*Terms & Conditions Applied</i>	<i>*Terms & Conditions Applied</i>

I Indoor **NT** Non Touchscreen

SENTUH DIGITAL SIGNAGE OLED TRANSPARENT **I** **T**

DISPLAY	
Panel Size	55
Backlight	OLED Transparent
Screen Resolution	1920 X 1080 (Full HD)
Display Ratio	16 : 9
Brightness	400 cd/m ²
Backlight Lifetime	>30.000 Hours
Screen Orientation	Landscape
Visual Angle	178° (H) / 178° (V)
Environment	Indoor
TOUCHSCREEN	
Touchscreen	Multitouch
Touch Type	Infrared
Touchpoint	10 Points
MAIN BOARD	
Operating System	Android
RAM	4 GB
Storage	32 GB
Network	LAN
	WIFI 2.4 GHz
	Bluetooth
AUDIO	
Speaker	Stereo
APPLICATION	
Application System	Sentuh CMS Basic
Monitoring	Sentuh Agent
CONNECTIVITY PORTS	
Ports	USB 2.0, LAN RJ45, HDMI, AC Power
POWER (APPROX.)	
Power Consumption (Max)	190 W
Power Consumption (Avg)	160 W
Power Requirement	AC 100V - 240V 50/60 Hz
ACCESSORIES	
Accessories	AC Power Cable, Base Stand
CUSTOMIZED*	
Logo	Yes
Color	Yes
<i>*Terms & Conditions Applied</i>	

I Indoor **T** Touchscreen

SENTUH DIGITAL SIGNAGE OUTDOOR SINGLE SIDE O NT

DISPLAY			
Panel Size	65	75	85
Backlight	TFT-LCD	TFT-LCD	TFT-LCD
Screen Resolution	1080 X 1920 (Full HD)	1080 X 1920 (Full HD)	1080 X 1920 (Full HD)
Display Ratio	16 : 9	16 : 9	16 : 9
Brightness	2000 cd/m ²	2000 cd/m ²	2000 cd/m ²
Backlight Lifetime	>60.000 Hours	>60.000 Hours	>60.000 Hours
Screen Orientation	Portrait	Portrait	Portrait
Visual Angle	178° (H) / 178° (V)	178° (H) / 178° (V)	178° (H) / 178° (V)
Environment	Outdoor	Outdoor	Outdoor
Waterproof Grade	IP55	IP55	IP55
Working Humidity	80%	80%	80%
Storage Humidity	80%	80%	80%
MAIN BOARD			
Operating System	Android	Android	Android
RAM	4 GB	4 GB	4 GB
Storage	16 GB	16 GB	16 GB
Network	LAN	LAN	LAN
	WIFI 2.4 GHz	WIFI 2.4 GHz	WIFI 2.4 GHz
	Bluetooth	Bluetooth	Bluetooth
CAMERA			
Camera	Yes	Yes	Yes
AUDIO			
Speaker	Yes	Yes	Yes
APPLICATION			
Application System	Sentuh CMS Basic	Sentuh CMS Basic	Sentuh CMS Basic
Monitoring	Sentuh Agent	Sentuh Agent	Sentuh Agent
CONNECTIVITY PORTS			
Ports	USB, LAN, AC Power	USB, LAN, AC Power	USB, LAN, AC Power
POWER (APPROX.)			
Power Consumption (Max)	750 W	850 W	950 W
Power Requirement	AC 100V - 240V 50/60 Hz	AC 100V - 240V 50/60 Hz	AC 100V - 240V 50/60 Hz
ACCESSORIES			
Accessories	AC Power Cable, Backdoor Key, Base Stand	AC Power Cable, Backdoor Key, Base Stand	AC Power Cable, Backdoor Key, Base Stand

O Outdoor NT Non Touchscreen

SENTUH DIGITAL SIGNAGE OUTDOOR DOUBLE SIDE O NT

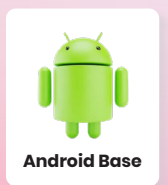
DISPLAY		
Panel Size	65	85
Backlight	TFT-LCD	TFT-LCD
Screen Resolution	1080 X 1920 (Full HD)	1080 X 1920 (Full HD)
Display Ratio	16 : 9	16 : 9
Brightness	2000 cd/m ²	2000 cd/m ²
Backlight Lifetime	>60.000 Hours	>60.000 Hours
Screen Orientation	Portrait	Portrait
Visual Angle	178° (H) / 178° (V)	178° (H) / 178° (V)
Environment	Outdoor	Outdoor
Waterproof Grade	IP55	IP55
Working Humidity	80%	80%
Storage Humidity	80%	80%
MAIN BOARD		
Operating System	Android	Android
RAM	4 GB	4 GB
Storage	16 GB	16 GB
Network	LAN	LAN
	WIFI 2.4 GHz	WIFI 2.4 GHz
	Bluetooth	Bluetooth
CAMERA		
Camera	Yes	Yes
AUDIO		
Speaker	Yes	Yes
APPLICATION		
Application System	Sentuh CMS Basic	Sentuh CMS Basic
Monitoring	Sentuh Agent	Sentuh Agent
CONNECTIVITY PORTS		
Ports	USB, LAN, AC Power	USB, LAN, AC Power
POWER (APPROX.)		
Power Consumption (Max)	1400 W	1700 W
Power Requirement	AC 100V - 240V 50/60 Hz	AC 100V - 240V 50/60 Hz
ACCESSORIES		
Accessories	AC Power Cable, Backdoor Key, Base Stand	AC Power Cable, Backdoor Key, Base Stand

O Outdoor NT Non Touchscreen

Sentuh Digital Signage



**Display Visual Canggih
Buatan Anak Bangsa**



Cyber Building I, 6th Floor
Jl. Kuningan Barat Raya No. 8
Jakarta Selatan - 12710
Indonesia

Contact

(P) 021 520 9845

(F) 021 520 9850

(E) marketing@sentuh.id

(W) www.sentuh.id

TKDN
Kemenperin



Official
Website

